



Company Overview and Capabilities

ABOUT GALE PACIFIC

Founded in Melbourne, Australia, in 1951, GALE Pacific is the market-leading manufacturer of technical fabrics used for consumer and commercial applications around worldwide. Today, GALE employs more than **550+ people** based in Australia, China, the United States, Europe, and Asia, with products recognised around the world for their quality, durability, sustainability, and reliability.

GALE Pacific is on a mission to inspire life to thrive with textile innovations guided by four principles:
Design, Comfort, Protection, and Sustainability.



The Company's commercial products, marketed under the GALE Pacific Commercial® brand, include knitted, coated, and advanced polymer fabrics used in a growing number of applications across the agricultural, horticultural, aquacultural, architectural, construction, mining, and packaging industries.

PRODUCT CATEGORIES

- Architectural Shade Fabric
- Horticultural Knitted Fabric
- Commercial Netting
- Agricultural Shade and Protection
- All-Weather Advertising Banners
- Coated Polyfabrics
- Food-Grade Coated Non-Wovens



The Company's consumer products, marketed under the Coolaroo® brand, include outdoor roller shades, shade sails, shade and garden fabrics, shade structures, and pet products. They can be found at market-leading major retailers, both in-store and online, around the world.

PRODUCT CATEGORIES

- Roller Shades
- Shade Sails
- Shade Fabric
- Pergolas and Gazebos
- Umbrellas
- Grow and Utility Bags
- Pet Beds

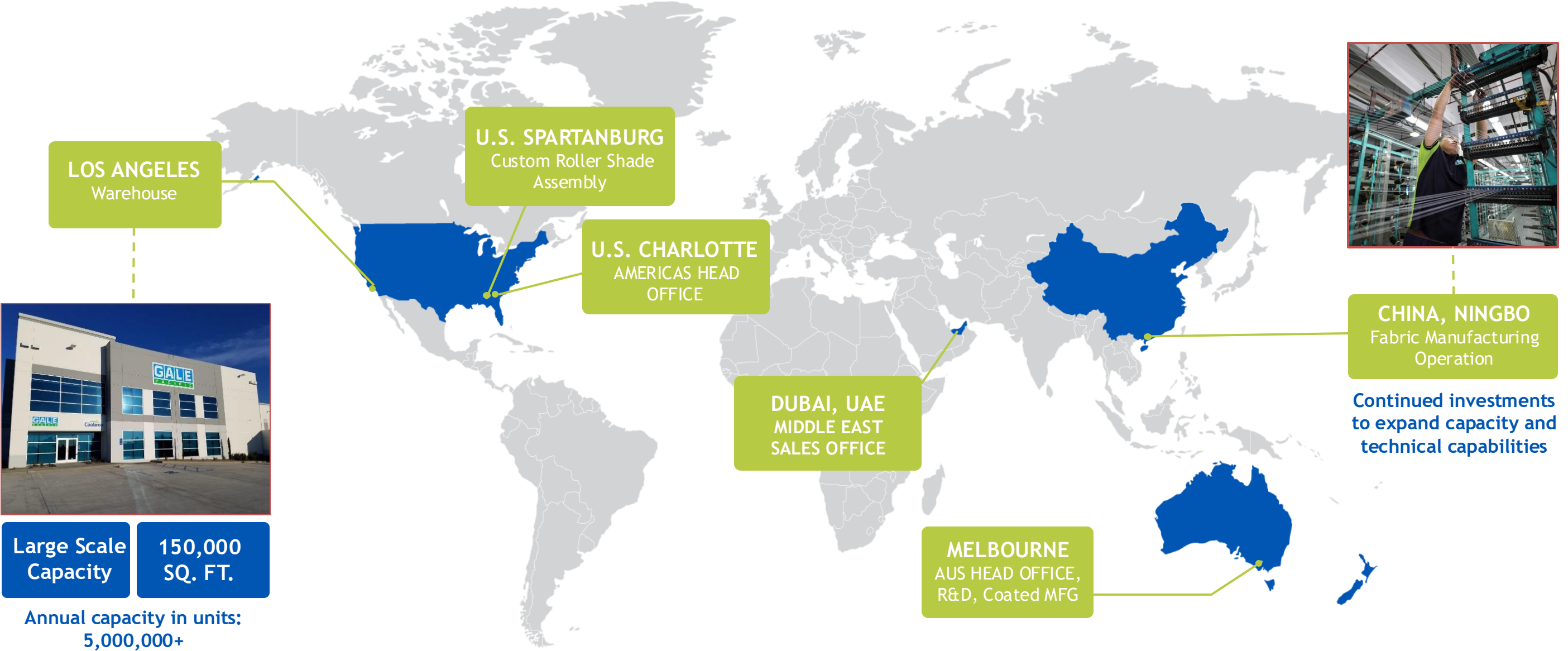


About GALE Pacific

Designed for, and tested in, the harshest environments on earth, only GALE Pacific's innovative, sustainable fabrics are the longest lasting in the industry, protecting people, food, water, and property for over 70 years.



A Global Company with Australian Roots



Large Scale Capacity 150,000 SQ. FT.

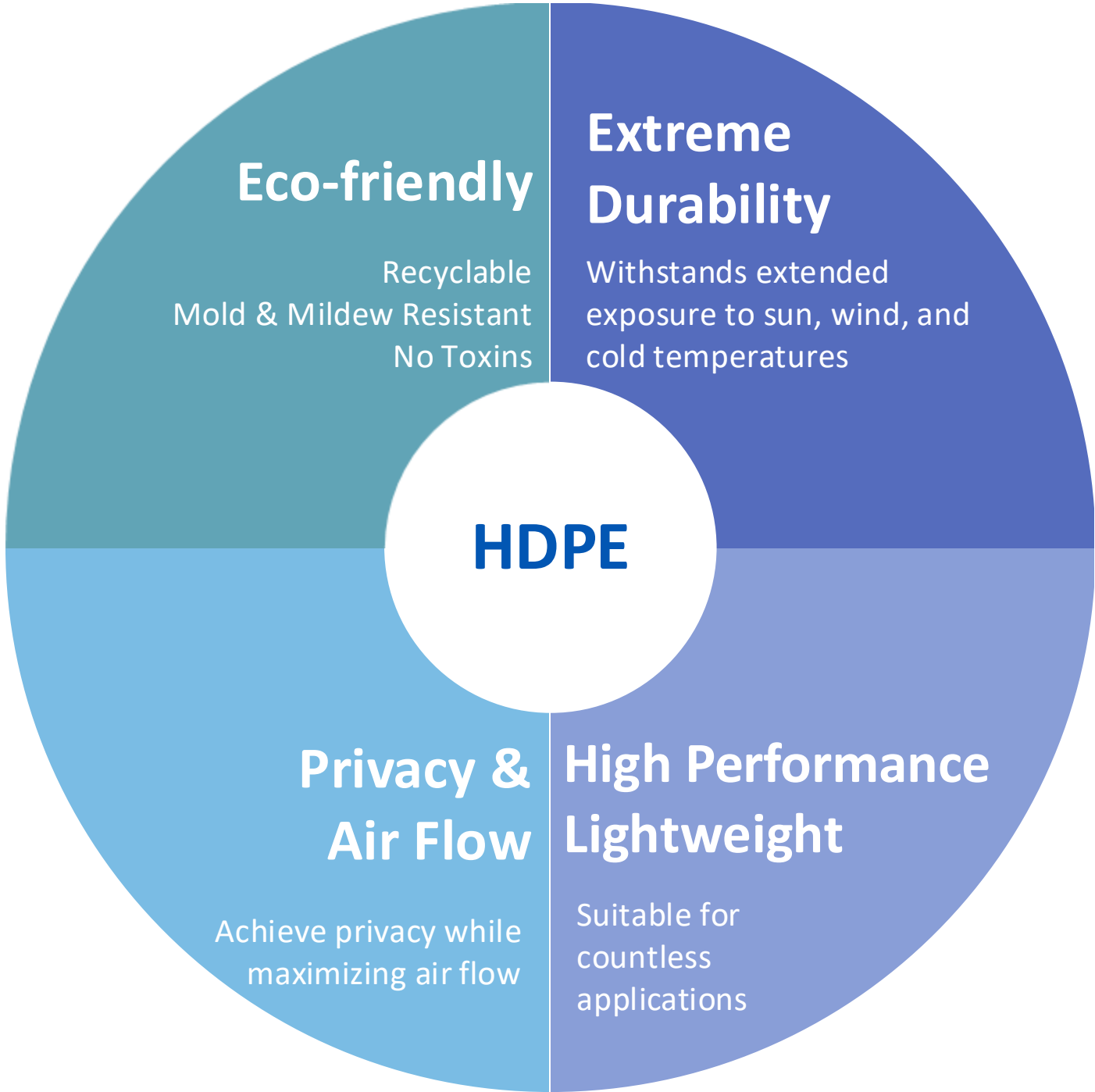
Annual capacity in units:
5,000,000+



ASSORTMENT REVIEW

Why Knitted HDPE?

HDPE fabric is the optimal choice for outdoor shade applications



Coolaroo: Expanding Throughout the Home

Coolaroo Structures



Butterfly Gazebo



Aurora Pergola



Umbrellas



Coolaroo Shade Sails



Party Sails



Ready-To-Hang



Premium Kits

Coolaroo Shade Fabric



30% UV Block



50% UV Block



70% UV Block



90% UV Block

Coolaroo Roller Shades



Exterior Blinds



Spring Operated Exterior



Wand Operated Exterior



Cordless Interior

Coolaroo Pet Beds



Original Elevated



Elevated Pro



On-the-Go

Coolaroo Bags



Grow Bags



Pet Bags



Utility Bags

HeatShield Technology Overview

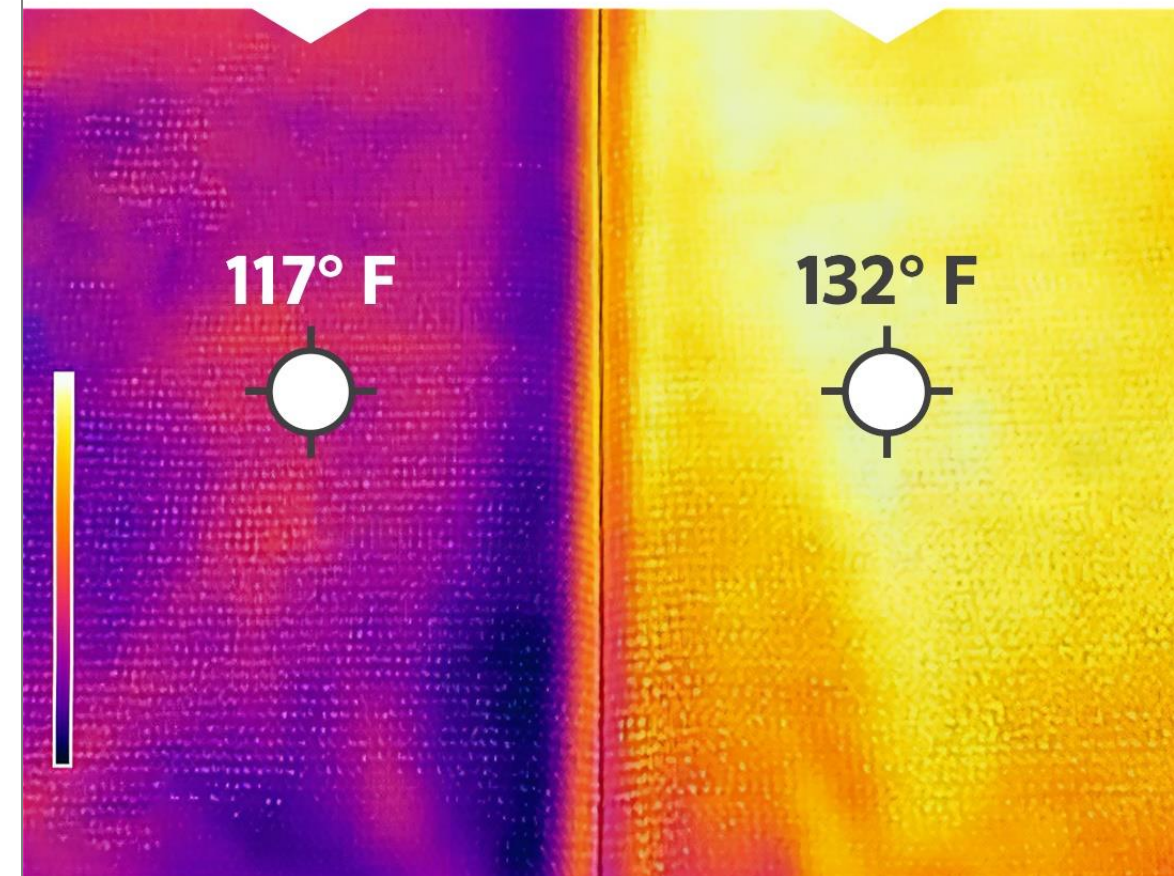
- HeatShield™ is an innovative technology that **actively reflects the IR rays** of the sun to reduce the surface temperature on fabric and beneath it.
- HeatShield™ is **raw material component** that is part of the Masterbatch, so it can't be washed off or wear out over time.
- HeatShield™, along with the natural cooling effect of overhead shade, can result in **up to 15°F (10°C) lower temperature** on the surface of the fabric and underneath the fabric.



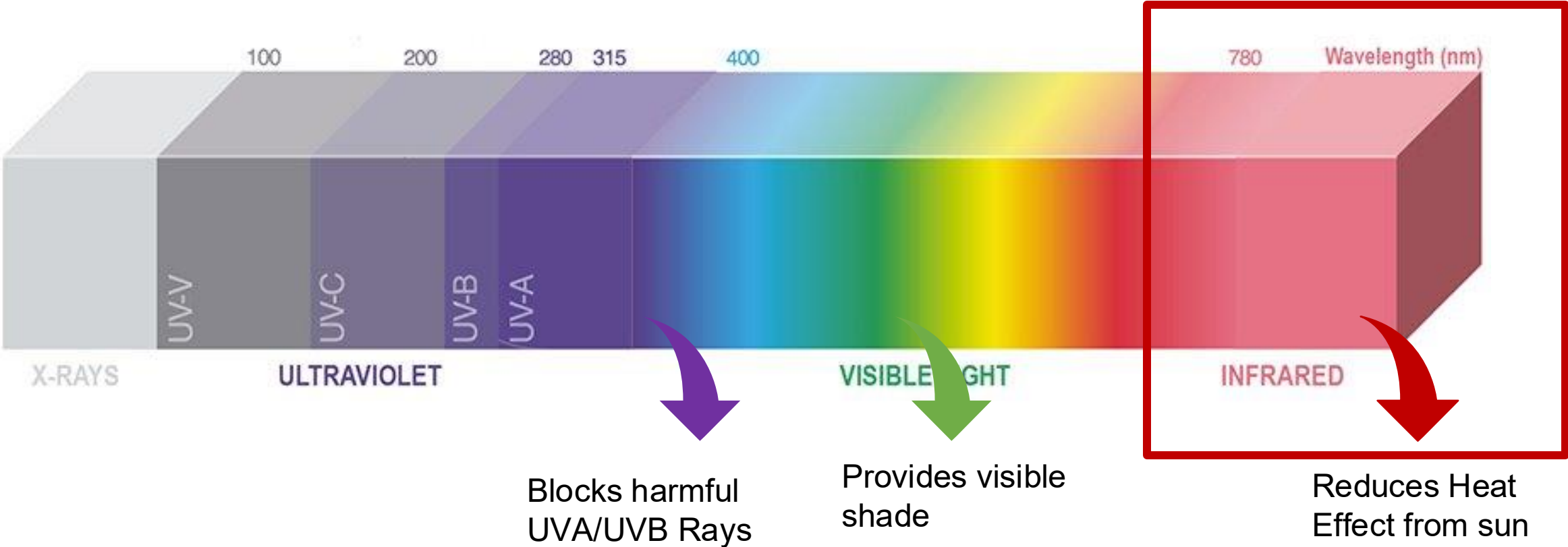
Surface Temperature Comparison



Other Fabric



HeatShield Technology Overview



Coolaroo At Major Retailers



Coolaroo At Major Retailers

